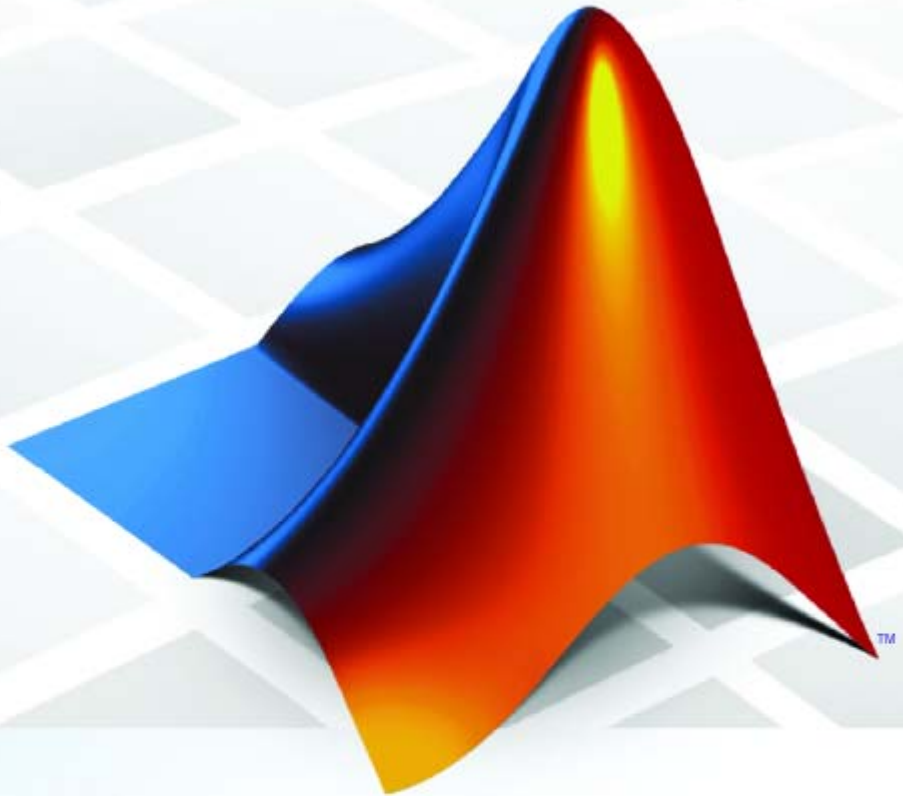


PolySpace™ 5

License Installation Guide



How to Contact The MathWorks



www.mathworks.com
comp.soft-sys.matlab
www.mathworks.com/contact_TS.html

Web
Newsgroup
Technical Support



suggest@mathworks.com
bugs@mathworks.com
doc@mathworks.com
service@mathworks.com
info@mathworks.com

Product enhancement suggestions
Bug reports
Documentation error reports
Order status, license renewals, passcodes
Sales, pricing, and general information



508-647-7000 (Phone)



508-647-7001 (Fax)



The MathWorks, Inc.
3 Apple Hill Drive
Natick, MA 01760-2098

For contact information about worldwide offices, see the MathWorks Web site.

PolySpace™ License Installation Guide

© COPYRIGHT 2007–2008 by The MathWorks, Inc.

The software described in this document is furnished under a license agreement. The software may be used or copied only under the terms of the license agreement. No part of this manual may be photocopied or reproduced in any form without prior written consent from The MathWorks, Inc.

FEDERAL ACQUISITION: This provision applies to all acquisitions of the Program and Documentation by, for, or through the federal government of the United States. By accepting delivery of the Program or Documentation, the government hereby agrees that this software or documentation qualifies as commercial computer software or commercial computer software documentation as such terms are used or defined in FAR 12.212, DFARS Part 227.72, and DFARS 252.227-7014. Accordingly, the terms and conditions of this Agreement and only those rights specified in this Agreement, shall pertain to and govern the use, modification, reproduction, release, performance, display, and disclosure of the Program and Documentation by the federal government (or other entity acquiring for or through the federal government) and shall supersede any conflicting contractual terms or conditions. If this License fails to meet the government's needs or is inconsistent in any respect with federal procurement law, the government agrees to return the Program and Documentation, unused, to The MathWorks, Inc.

Trademarks

MATLAB and Simulink are registered trademarks of The MathWorks, Inc. See www.mathworks.com/trademarks for a list of additional trademarks. Other product or brand names may be trademarks or registered trademarks of their respective holders.

Patents

The MathWorks products are protected by one or more U.S. patents. Please see www.mathworks.com/patents for more information.

Revision History

March 2008 Online Only New for Version 5.1 (Release 2008a)

PolySpace™ License Installation

1

| | |
|--|-------------|
| Introduction | 1-2 |
| About this Manual | 1-2 |
| What is FLEXnet® Manager? | 1-2 |
| PolySpace™ Licensing Options | 1-3 |
| FLEXnet® Software Components | 1-5 |
| Supported Machines and Versions | 1-7 |
| | |
| Installing FLEXnet® Manager on Windows® Systems .. | 1-9 |
| Software Location | 1-9 |
| Installing the FLEXnet® Server | 1-9 |
| Configuring the License Manager | 1-10 |
| | |
| Installing FLEXnet® Manager on UNIX® Systems | 1-14 |
| Software Location | 1-14 |
| Installing the FLEXnet® Server | 1-14 |
| Configuring the FLEXnet® Server | 1-15 |
| | |
| Installing PolySpace™ Licenses on an Existing FLEXnet® Server | 1-16 |
| | |
| Installing PolySpace™ License Files | 1-17 |
| Overview | 1-17 |
| License.dat File Installation and Location | 1-17 |
| Checking PolySpace™ Usage | 1-18 |
| Error Messages | 1-19 |
| | |
| License Format | 1-22 |
| Types of Licensing | 1-22 |
| Getting the License hostid | 1-24 |

PolySpace™ License Installation

| | |
|---|---|
| Introduction (p. 1-2) | Provides an overview of the PolySpace™ licensing architecture |
| Installing FLEXnet® Manager on Windows® Systems (p. 1-9) | Describes how to install and configure the license server on Windows® Systems |
| Installing FLEXnet® Manager on UNIX® Systems (p. 1-14) | Describes how to install and configure the license server on UNIX® Systems |
| Installing PolySpace™ Licenses on an Existing FLEXnet® Server (p. 1-16) | Describes how to install PolySpace licenses on an existing license server |
| Installing PolySpace™ License Files (p. 1-17) | Describes how to install a license file for PolySpace products |
| License Format (p. 1-22) | Describes the types of license files available and how to obtain the license hostid |

Introduction

| In this section... |
|---|
| “About this Manual” on page 1-2 |
| “What is FLEXnet® Manager?” on page 1-2 |
| “PolySpace™ Licensing Options” on page 1-3 |
| “FLEXnet® Software Components” on page 1-5 |
| “Supported Machines and Versions” on page 1-7 |

About this Manual

This manual describes PolySpace™ licensing for administrators and users of PolySpace products. It describes individual licenses, FLEXnet® server installation, and how to use PolySpace products with FLEXnet licenses.

Note Individual licenses do not use the FLEXnet server. For individual licences, you need only copy the `license.dat` file to the appropriate path (`/PolySpace_Common/etc` by default).

What is FLEXnet® Manager?

Macrovision® FLEXnet Manager is a network license manager used to control the use of the PolySpace software products.

FLEXnet Manager is the most popular license manager in the software industry. FLEXnet Manager allows software licenses to be available anywhere on a network, instead of being tied to specific machines. Floating licensing benefits both users and license administrators. Users make more efficient use of fewer licenses by sharing them on the network. License managers control the users and machines that have access to the software managed by FLEXnet Manager.

Note FLEXnet Manager is not automatically installed as part of the PolySpace software installation.

PolySpace™ Licensing Options

Two types of licenses are available: individual and concurrent licenses.

Individual licenses

Individual licenses are appropriate for end users who want to install, operate, and administer the software themselves. An Individual license authorizes you to use your PolySpace software on any computer to which you have access. For example, with an Individual license you can run PolySpace products only on your work system. This system can be any combination of Microsoft® Windows® or UNIX® computers.

With an Individual license, you are the system administrator. In this role, you are responsible for:

- Installing the PolySpace software on your computer
- Ensuring that you are the only person who runs the software on your computer.

You need either the MAC address or Serial disk number of your computer to generate an individual license (see “Getting the License hostid” on page 1-24). To obtain an individual license, refer to “Installing PolySpace™ License Files” on page 1-17.

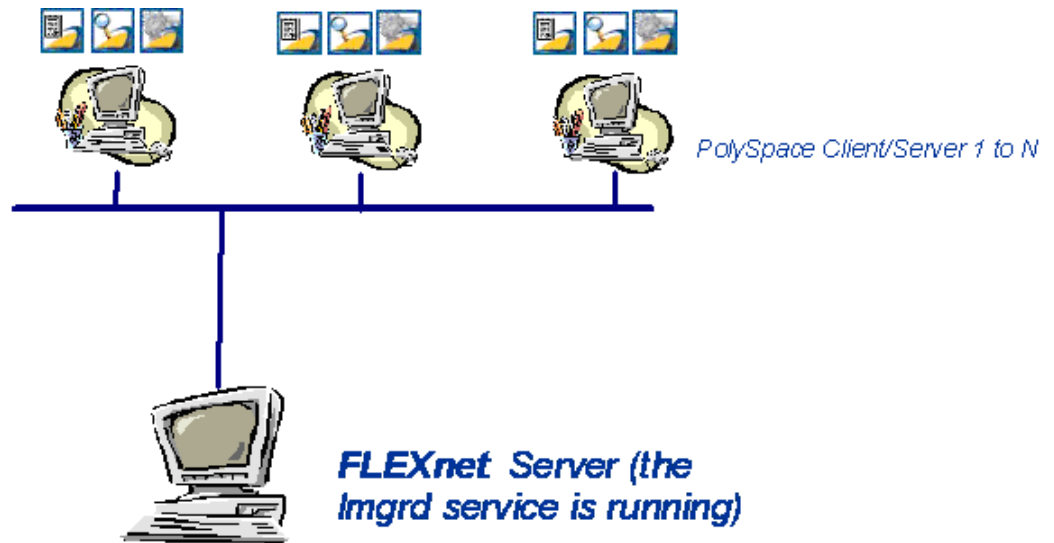
Note Individual licenses do not use the FLEXnet server. For individual licenses, you need only copy the `license.dat` file to the appropriate path (`/PolySpace_Common/etc` by default).

Concurrent licenses

Concurrent licenses are appropriate for organizations that have standardized on the FLEXnet license manager, or who need to impose strict limits on software use for accounting or license management purposes.

With a Concurrent license, software access is not limited to specific users, as it is with a Network Named User license. Rather, concurrent licenses use license keys to control access. Users check out a license key when they start a PolySpace product. When all the keys for a particular product are checked out, the license manager denies further requests.

The system administrator for Concurrent licenses must set up an installation that optimizes accessibility to the products. Concurrent licenses allow you to install the software only in a Network Concurrent User installation type.



PolySpace™ FLEXnet® Server Architecture

The previous figure shows how to use PolySpace products with a FLEXnet license manager:

- PolySpace products are used by any number of users. The PolySpace products can include both Client and Server products.
- Each PolySpace product requests licenses from the FLEXnet server.
- The FLEXnet server can be installed on the same machine as a PolySpace product, as long as it is running a mutually supported operating system (see “Supported Machines and Versions” on page 1-7).

FLEXnet® Software Components

- “Windows® Platforms” on page 1-5
- “Linux® or Solaris™ Platforms” on page 1-7

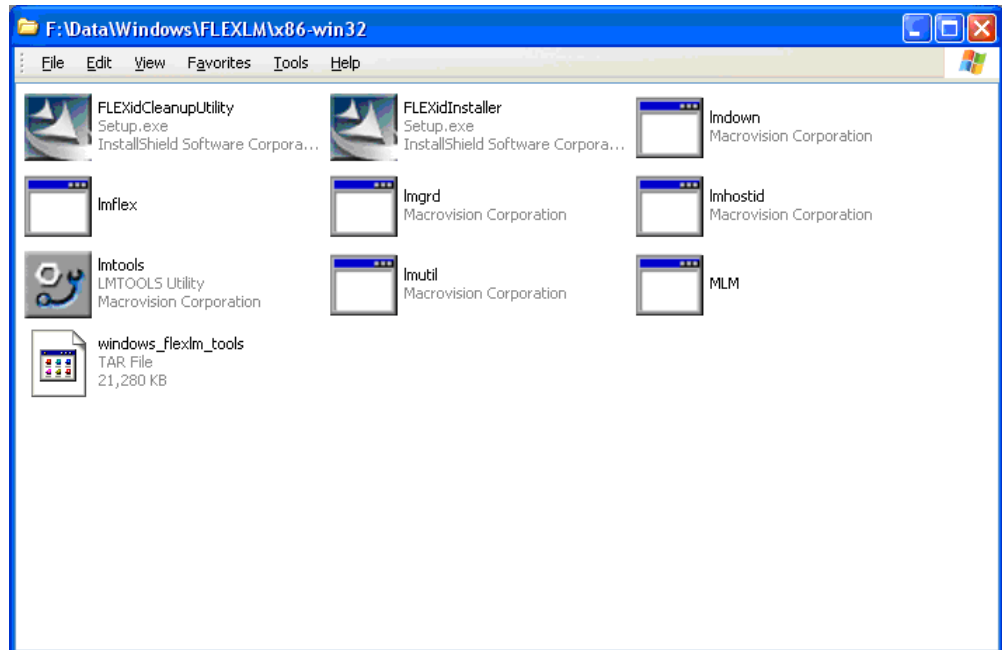
Windows® Platforms

On a Windows system, the following software components relate to the standard FLEXnet package (see FLEXnet® Components on page 1-6).

| FLEXnet Component | Description |
|--------------------------|--|
| license.dat | License file. If you do not have a license, contact The MathWorks. |
| FLEXidInstaller.exe | Allows you to install the FLEXnet server. |
| FLEXidCleanupUtility.exe | Allows you to uninstall the FLEXnet server. |
| lmtools.exe | Allows you to manage the license. |
| MLM.exe | Vendor service that keeps track of the number of licenses checked out, and where they are. |
| lmgrd.exe | License service that handles the initial contact with PolySpace products, passing the connection on to MLM.exe. This service also starts and restarts MLM.exe. |
| lmdown.exe | Allows you to stop the Server. Can be used from the command line. |
| lmhostid.exe | Allows you to see the hostid of your machine. Can be used from the command line. |

| FLEXnet Component | Description |
|----------------------|--|
| lmflex.exe | Allows you to check available features of the license server. Can be used from the command line. |
| lmutil.exe | Allows you to perform license server management and administration, for example, displaying the MAC address, IP address, disk serial number, and user name. Can be used from the command line. |
| windows_flexlm_tools | Internal binary data file related to the associated Windows machine. |

The following figure shows the FLEXnet components available on the CD-ROM in *CD-ROM\Data\Windows\FLEXLM\x86-win32*.



FLEXnet® Components

Linux® or Solaris™ Platforms

On a Linux® or Solaris™ system, the following software components relate to the standard FLEXnet package.

| FLEXnet Component | Description |
|--------------------------|---|
| MLM | Vendor service that keeps track of the number of licenses checked out, and where they are. |
| lmgrd | License daemon that handles the initial contact with PolySpace products, passing the connection on to MLM.exe. This service also starts and restarts MLM.exe. |
| lmdown | Allows you to stop the Server. |
| lmhostid | Allows you to see the hostid of your machine. |
| lmflex | Allows you to check available features of the license server. |
| lmutil | Allows you to manage the license server, for example, displaying the MAC address, IP address, disk serial number, and user name. |
| linux_flexlm_tools | Internal binary data file related to the associated Linux machine. |
| sun_solaris_flexlm_tools | Internal binary data file related to the associated Solaris machine. |

Note Installing these components consists of copying them from the CD-ROM: *CDROM/Data/Unix/FLEXLM/x86-linux* and *CDROM/Data/Unix/FLEXLM/sparc-solaris*.

Supported Machines and Versions

- “Supported FLEXnet® Releases” on page 1-8
- “Supported Machines” on page 1-8

- “Network Recommendations for Concurrent Licensing” on page 1-8

Supported FLEXnet® Releases

PolySpace products support FLEXnet release 10.8.

Supported Machines

You can install the FLEXnet server on all platforms supported by PolySpace products, as well as Windows Server 2003 (which is not supported by PolySpace products). The following table summarizes license protections, FLEXnet server support, and PolySpace product support for available operating systems:

| Protection | Windows | | | Linux ¹ | | Solaris | | Suse | |
|--|---------|----|------|--------------------|-----|---------|-----|------|------|
| Port | 2000 | XP | 2003 | 3.0 | 4.0 | 2.7 | 2.8 | 10.0 | 10.1 |
| FLEXnet Manager release 10.8 | | | | | | | | | |
| Hostid ² | OK | OK | OK | OK | OK | OK | OK | OK | OK |
| PolySpace Products release 2007a+ | | | | | | | | | |
| Hostid | OK | OK | NO | OK | OK | OK | OK | OK | OK |

Network Recommendations for Concurrent Licensing

You must have a good network configuration for the FLEXnet client to obtain good performance for your PolySpace verifications.

If the client machine knows the FLEXnet server in its hosts file, PolySpace verifications run quickly. However, if the client machine does not know the FLEXnet server (ping *server_name* does not work), the PolySpace verification takes more than twice the time.

1. RedHat Enterprise Linux Workstation

2. Hostid can be a Mac address or serial disk number (see)

Installing FLEXnet® Manager on Windows® Systems

| In this section... |
|--|
| “Software Location” on page 1-9 |
| “Installing the FLEXnet® Server” on page 1-9 |
| “Configuring the License Manager” on page 1-10 |

Note FLEXnet® Manager is not installed as part of the PolySpace™ software installation.

Software Location

The FLEXnet software components are located on the PolySpace Products CD-ROM in:

CD-ROM\Data\Windows\FLEXLM\x86-win32.

Note The current documentation is located in *CD-ROM/Docs/Manuals*.

Installing the FLEXnet® Server

Installation consists of a copy and paste:

- 1 Copy the *CD-ROM*\Data\Windows\FLEXLM\x86-win32 directory on the machine. A permanent directory must be chosen on this machine.
- 2 Copy in the license file (*license.dat*) to the chosen directory.
- 3 Run the *FLEXidInstaller.exe* in the chosen directory and follow the instruction given by the installer.

The previous picture (see FLEXnet® Components on page 1-6) shows an example of a copy of the FLEXnet server on a chosen directory.

Configuring the License Manager

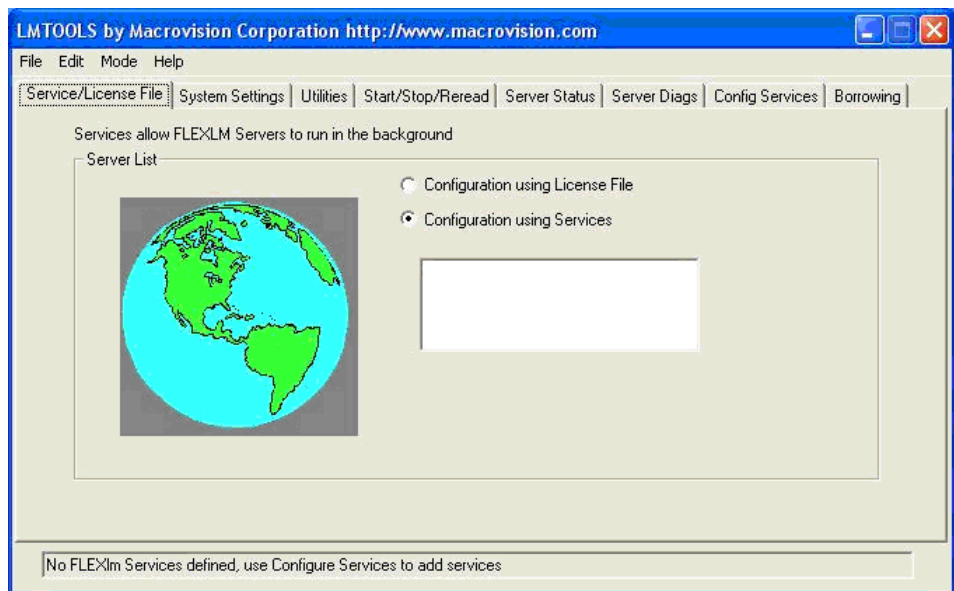
Before setting up the FLEXnet server, you must update the `license.dat` file with the name of the server, or its IP address. For more information, see “License Format” on page 1-22

You must have Administrator privileges to configure a license server as a service.

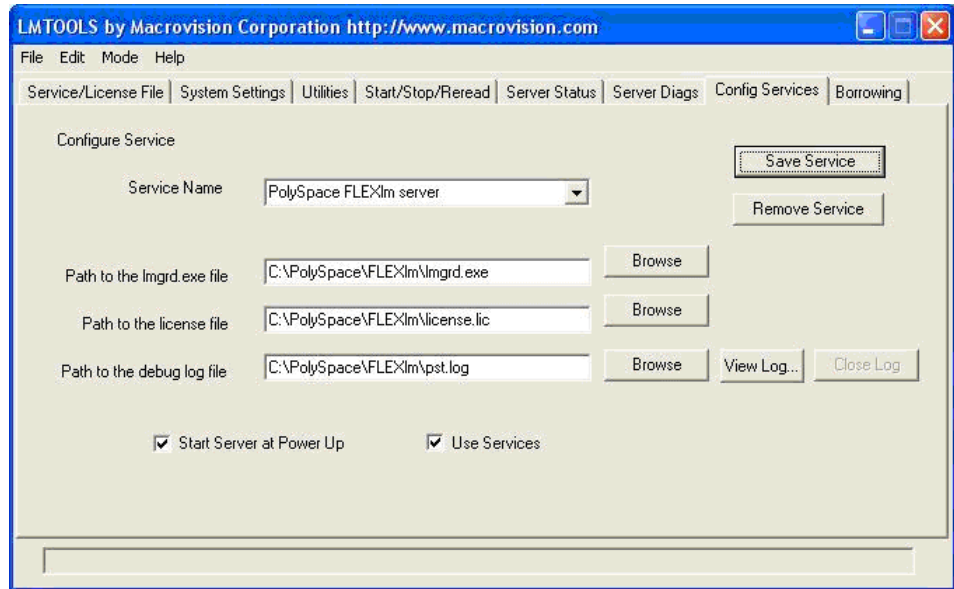
To configure the license server as a service:

- 1 Run `lmtools.exe`.

The LMTOOLS dialog box appears.



- 2 Select the **Configuration using Services** radio button.
- 3 Select the **Config Services** tab.

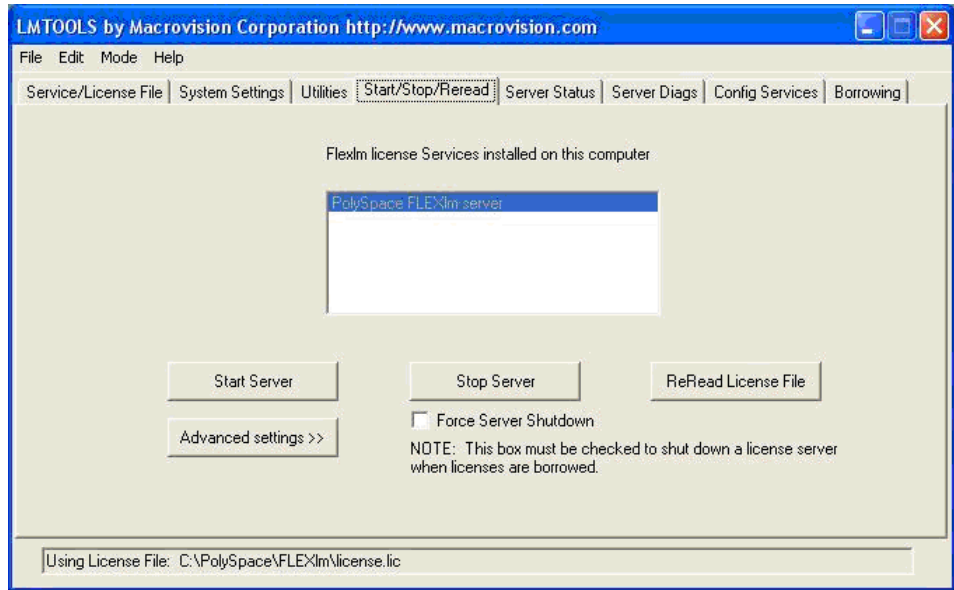


- 4** In the **Service Name** field, type the name of the service that you want to define, for example, PolySpace FLEXnet Server.
- 5** In the **Path to the lmgrd.exe file** field, enter or browse to lmgrd.exe for the license Server.
- 6** In the **Path to the license file** field, enter or browse to the license file for the license Server. It relates to the license.dat file. The license.dat file is provided when you buy a PolySpace product.

Note The server name or IP address must be updated in the license.dat file (see “Types of Licensing” on page 1-22).

- 7** In the **Path to the debug log file** field, enter or browse to the debug log file that this license server writes. Before, you have created it in the permanent chosen directory.
- 8** Select the two radio button **Use Services** and **Start server at power up**.

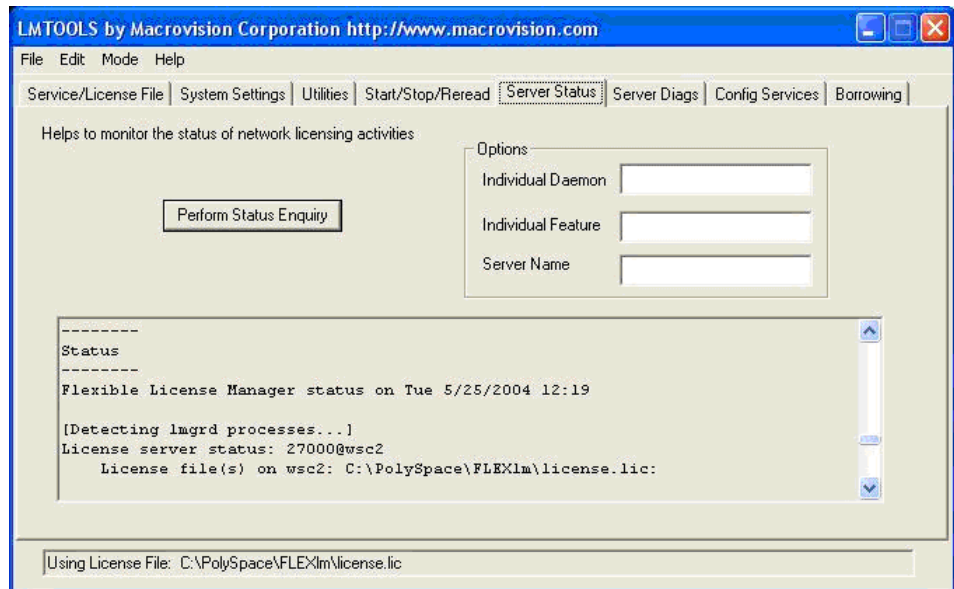
- 9 Click **Save Service** to save the new “PolySpace FLEXnet Server” service.
- 10 Select the Start/Stop/Reread tab.



- 11 Click **Start Server** to Start the FLEXnet Server .

Note Any modification on the license.dat file requires the server to reread the license file, this is accomplished by using the “ReRead license file” button.

- 12 Select the **Server Status** tab.



- 13 Click the **Perform Status Enquiry** button to verify the status of the server.

On the output window, a message gives the status of the Server and of the license.dat file (see format in “License Format” on page 1-22).

Installing FLEXnet® Manager on UNIX® Systems

| In this section... |
|--|
| “Software Location” on page 1-14 |
| “Installing the FLEXnet® Server” on page 1-14 |
| “Configuring the FLEXnet® Server” on page 1-15 |

Note FLEXnet® Manager is not installed as part of the PolySpace™ software installation.

Software Location

The FLEXnet software components are located on the PolySpace Products CD-ROM in:

CD-ROM/Data/Unix/FLEXLM.

This directory contains sub-folders *x86-linux*, and *sparc-solaris*:

- *x86-linux* — concerns all Linux® OS supported by PolySpace software.
- *sparc-solaris* — concerns Solaris™ OS supported by PolySpace software.

Note The current documentation is located in *CD-ROM/Docs/Manuals*.

Installing the FLEXnet® Server

Installation consists of a copy and paste:

- 1 The first step: copy the *CD-ROM/Data/Unix/FLEXLM/UNIX* directory on the server (*UNIX* could be *x86-linux* or *sparc-solaris*). A permanent directory must be chosen on this machine.
- 2 Then copy the license file *license.dat* in the chosen directory.

Configuring the FLEXnet® Server

Before setting up the FLEXnet server, you must update the `license.dat` file with the name of the server, or its IP address. For more information, see “License Format” on page 1-22.

To configure the license server on a UNIX® system:

- Start the FLEXnet daemon server:

```
FLEXnetPath/lmgrd -c license_lic_path -l filename.log &
```

where *license_lic_path* is the absolute location of the file `license.dat` file. It is recommended to launch server with option `-l filename.log`. It permits to have a log file where all accesses and exchanges are notified in file name *filename.log*.

For example, with all commands and `license.dat` file located in `/usr/local/PolySpace/FLEXnet`:

```
/usr/local/PolySpace/FLEXnet/lmgrd c  
/usr/local/PolySpace/FLEXnet/license.dat l  
/usr/local/PolySpace/FLEXnet/FLEXnet.log &
```

Note `./lmgrd h` gives more information about all available options of the program. Also, `FLEXnet.log` file gives a state of the FLEXnet server.

- To shutdown the server, launch:

```
./lmutil lmdown -c license_lic_path.
```

Note `./lmutil h` gives more information about all available options of the `lmutil` program.

Installing PolySpace™ Licenses on an Existing FLEXnet® Server

If you are already using a FLEXnet® license manager, refer to the FLEXnet Manager user manual for information on how to add licenses for your PolySpace™ software. You can access the FLEXnet user manual directly from the Macrovision® web site (<http://www.macrovision.com>).

Note The lmgrd or lmgrd.exe service must have the same version number for all Vendor products. Refer to the FLEXnet version number supported by PolySpace products in “Supported FLEXnet® Releases” on page 1-8.

Installing PolySpace™ License Files

In this section...

“Overview” on page 1-17

“License.dat File Installation and Location” on page 1-17

“Checking PolySpace™ Usage” on page 1-18

“Error Messages” on page 1-19

Overview

This section describes how to install an individual license for PolySpace™ products, using a `license.dat` file. It also describes how to check license usage.

Refer to the *PolySpace Installation Guide* for information on installing PolySpace products.

License.dat File Installation and Location

The same `license.dat` file must be used for the FLEXnet® server and for any PolySpace product, with the standard PolySpace subfolder localization (see format in “License Format” on page 1-22):

- `PolySpaceInstallCommon/etc` on a UNIX® platform (name of sub folder is by default `PolySpace_Common` and located just above PolySpace Product).
- `PolySpaceInstallCommon\etc` on a Windows® platform.

Caution The *license.dat* file must not be renamed and must be placed in the `/etc` directory, just like the old `license.dat` file. Along with this, you must remove any `license.dat` file from the `/etc` directory.

For the license file localization, The FLEXnet behavior is used. The license file is searched in the following order:

- 1 License file from MLM_LICENSE_FILE or LM_LICENSE_FILE environment variable if set.
- 2 License file from etc directory in *PolySpaceInstallCommon*.
- 3 License file from Windows registry (`\HKEY_LOCAL_MACHINE\Software\FLEXlm\License Manager`) or in `$HOME/.flexlmrc` on UNIX machine.
- 4 License file from `C:\flexlm` on a Windows machine or from `/usr/local/flexlm/licenses` on a UNIX machine.

Note If no `license.dat` has been found at the previous location, The FLEXnet licensing management searches for a `license.lic` file.

Checking PolySpace™ Usage

The PolySpace products usage is standard. The command `polyspace[-desktop]-[c|ada|cpp|ada95]-check-license` allows you to check a PolySpace license.

The result of the command can be seen in a PolySpace log file:

```
<polyspace-c-check-license 2007a+ PID460 PGID2616>  
<polyspace-viewer V4.2.2.12>
```

```
Options used with Verifier:
```

```
-prog=polyspace  
-polyspace-version=4_2_1_6
```

```
-lang=C  
-no-exec=true
```

```
Verifying host configuration ...
```

```
*** Configuration of the host : OK  
Checking license ...  
license is OK
```

On a Windows machine, the same command is available:
`/cygdrive/c/PolySpaceInstallDir/bin/polyspace[-desktop-]
 -[c|cpp|ada95] -check-license.`

Error Messages

Most of the error messages are displayed in the log file, just after a license checking. As the license can be checked at any moment during an analysis, a message can also be displayed at any location in the associated PolySpace Log file. It generally stops the analysis.

Common errors include:

- “Error -15, the FLEXnet® server is unreachable” on page 1-19
- “Error -5, the PolySpace™ feature is not available” on page 1-20
- “Error -21, the maintenance date has expired” on page 1-20
- “Error -10, the license date has expired” on page 1-20

For other errors, please refer to the *FLEXnet Licensing End User Guide* available at www.macrovision.com.

Error -15, the FLEXnet® server is unreachable

```
Checking license ...
Unable to checkout feature PolySpace_Client_C_CPP for version 17:
Cannot connect to license server system.
The license server manager (lmgrd) has not been started yet,
the wrong port@host or license file is being used, or the
port or hostname in the license file has been changed.
Feature:      PolySpace_Client_C_CPP
Server name:  fitou
License path: /usr/local/attol/atu/v33a/sun4/sunOS5/bin/license.txt:
              /usr/local.rhone/pst/tmp/nnu.lic:/usr/local.rhone/pst/*.lic
FLEXnet Licensing error:-15,570. System Error: 115 "Operation
now in progress"
For further information, refer to the FLEXnet Licensing
End User Guide, available at "www.macrovision.com".
*** License error
```

*** Aborting.

Error -5, the PolySpace™ feature is not available

```
Checking license ...
Unable to checkout feature PolySpace_Client_C_CPP for version 17:
No such feature exists.
Feature:      PolySpace_Client_C_CPP
License path: /usr/local/attol/atu/v33a/sun4/sunOS5/bin/license.txt:
              /usr/local.rhone/pst/tmp/nnu.lic:/usr/local.rhone/pst/*.lic
FLEXnet Licensing error:-5,357
For further information, refer to the FLEXnet Licensing
End User Guide, available at "www.macrovision.com".
*** License error
*** Aborting.
```

Error -21, the maintenance date has expired

```
Checking license ...
Unable to checkout feature PolySpace_Client_C_CPP for version 17:
License file does not support this version.
Feature:      PolySpace_Client_C_CPP
Application version > License version: 17 > 16
License path: /usr/local/attol/atu/v33a/sun4/sunOS5/bin/license.txt:
              /usr/local.rhone/pst/tmp/nnu.lic:/usr/local.rhone/pst/*.lic
FLEXnet Licensing error:-21,126
For further information, refer to the FLEXnet Licensing
End User Guide, available at "www.macrovision.com".
*** License error
*** Aborting.
```

Error -10, the license date has expired

```
Checking license ...
Unable to checkout feature PolySpace_Client_C_CPP for version 17:
Feature has expired.
Feature:      PolySpace_Client_C_CPP
Expire date:  31-jan-2007
```



```
License path: /usr/local/attol/atu/v33a/sun4/sunOS5/bin/license.txt:  
              /usr/local.rhone/pst/tmp/nnu.lic:/usr/local.rhone/pst/*.lic  
FLEXnet Licensing error:-10,32  
For further information, refer to the FLEXnet Licensing  
End User Guide, available at "www.macrovision.com".  
*** License error  
*** Aborting.
```

License Format

| In this section... |
|---|
| “Types of Licensing” on page 1-22 |
| “Getting the License hostid” on page 1-24 |

Types of Licensing

The license file is named `license.dat`.

PolySpace™ product can run with two kinds of license files:

- “Concurrent License File” on page 1-22
- “Individual License File” on page 1-24

Concurrent License File

This license file requires a FLEXnet® license manager running. It has the following format:

```
SERVER server_name server_hostid
VENDOR MLM
INCREMENT PolySpace_Feature MLM passcode_version_number
date_of_license_end number_of_licenses key
HOSTID=internal_number DUP_GROUP=UH SN=a_serial_number
```

- *server_name* — name of the FLEXnet server or IP address.

Note This is the only value that can be edited (with an ASCII editor) by the administrator when the location of the FLEXnet server changes. This file can be edited and *server_name* changed before setting up the FLEXnet server (see “Configuring the License Manager” on page 1-10 for Windows® systems, or “Configuring the FLEXnet® Server” on page 1-15 for UNIX® systems).

- *server_hostid* — This is the *hostid* of the server, usually the Mac address on UNIX system and the disk serial number on Windows (see “Getting the License *hostid*” on page 1-24). The *server_hostid* must be given to obtain a license file.
- MLM: Vendor daemon for PolySpace products licensing.
- *PolySpace_Feature* — type of license.

| PolySpace Feature | License Type |
|-------------------------|---|
| PolySpace_Client_C_CPP | PolySpace™ Client™ for C/C++ (including Viewer, MISRA®, DRS, Main generator and Report features). |
| PolySpace_Client_Ada | PolySpace Client for Ada (including Viewer and Report features). |
| PolySpace_Server_C_CPP | PolySpace™ Server™ for C/C++ (including Remote Launcher, MISRA, DRS and Report features). |
| PolySpace_Server_Ada | PolySpace Server for Ada (including Remote Launcher and Report features). |
| PolySpace_Model_Link_SL | PolySpace Model Link™ SL (including Viewer, MISRA, DRS and Report features). |
| PolySpace_Model_Link_TL | PolySpace Model Link TL (including Viewer, MISRA, DRS and Report features). |
| PolySpace_UML_Link_RH | PolySpace UML Link™ RH (including Viewer and Report features). |

Note The previous table lists an exhaustive review of all available licenses for PolySpace products.

- *passcode_version_number* and *date_of_license_end* — available maintenance (and end dates).
- *number_of_licenses* — number of available licenses for a given type.

Example:

```
SERVER dev13 831da5d6
VENDOR MLM
#
INCREMENT PolySpace_Client_C_CPP MLM 17 31-jan-2008 20 DF1FB89EB243
HOSTID=ID=12345 DUP_GROUP=UH SN=12345
INCREMENT PolySpace_Server_C_CPP MLM 17 31-jan-2008 20 9BFB0453E70F
HOSTID=ID=1234E DUP_GROUP=UH SN=1234E
INCREMENT PolySpace_Model_Link_SL MLM 17 31-jan-2008 20 B639E1D6739A
HOSTID=ID=324AF DUP_GROUP=UH SN=324AF
```

Individual License File

This kind of license is used for individual user and computer. It *does not* require a FLEXnet license manager running. It has the following format:

```
INCREMENT PolySpace_Feature MLM passcode_version_number
date_of_license_end uncounted key HOSTID=machine_hostid
SN=serial_number
```

machine_hostid— This is the hostid of the machine, usually the Mac address on UNIX system and the disk serial number on Windows (see “Getting the License hostid” on page 1-24). The *machine_hostid* must be given to obtain a license file.

Example

```
INCREMENT PolySpace_Client_C_CPP MLM 17 31-jan-2008
uncounted DF1FB89EB243
HOSTID=DISK_SERIAL_NUM=e855c07a SN=AE12345
```

Getting the License hostid

- “UNIX® Platforms” on page 1-25
- “Windows® Platforms” on page 1-25

UNIX® Platforms

On a UNIX machine, the *hostid* corresponds to the MAC address of the machine where the FLEXnet server is running (using a concurrent license) or where the individual license is used.

The *hostid* of a UNIX machine can be display using the *lmutil* FLEXnet utility available on the PolySpace CD-ROM at *CD-ROM/Data/Unix/FLEXLM/x86-linux* for a Linux® system or at *CD-ROM/Data/Unix/FLEXLM/sparc-solaris* for a Solaris™ system. Use the following command:

```
./lmutil lmhostid
```

The result on a shell window looks like the following:

```
lmutil - Copyright (c) 1989-2007 by Macrovision Corporation.  
All rights reserved.
```

```
The FLEXlm host ID of this machine is "831da5d6"
```

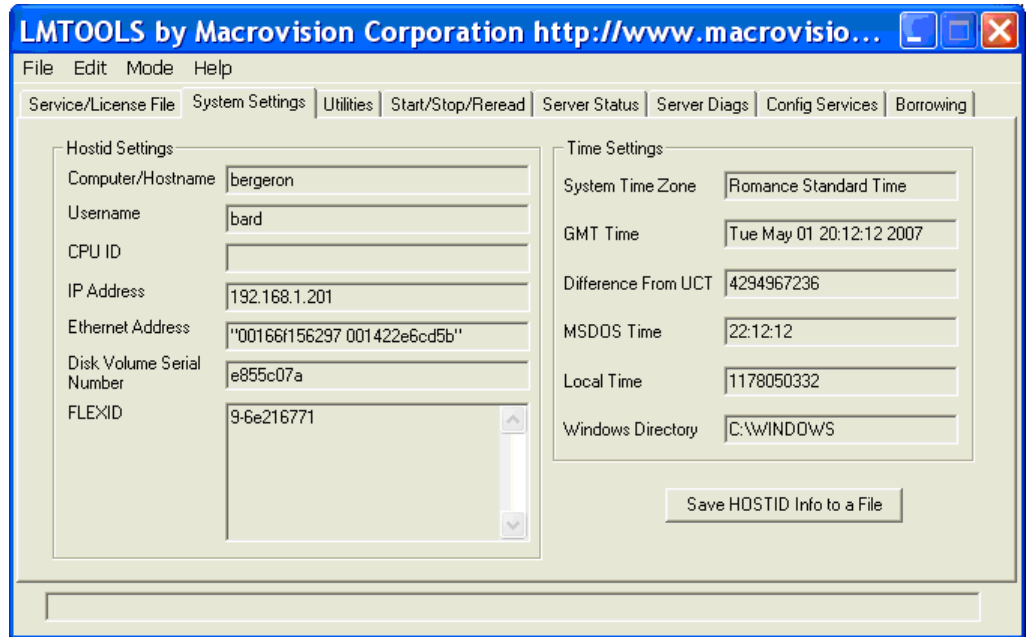
The number between double quotes needs to be transmitted to The MathWorks in order to obtain the license file.

Windows® Platforms

On a Windows machine, *hostid* or *machine_hostid* corresponds to the Serial disk number of the machine where the FLEXnet server is running (using a concurrent license) or where the individual license is used.

The *hostid* of a Windows machine can be display using the *lmtools.exe* FLEXnet utility available on the PolySpace CD-ROM at *CD-ROM\Data\Windows\FLEXLM\x86-win32*.

The **Disk volume serial number** needs to be checked in the System Settings tab of *lmtools.exe* on Windows (see Disk Volume Serial Number Accessible from LMTOOLS on page 1-26).



Disk Volume Serial Number Accessible from LMTOOLS

It can also be obtain using the following command prompt:

```
lmutil.exe lmhostid -vsn
```

The result on a Command Prompt window looks like the following:

```
lmutil - Copyright (c) 1989-2007 by Macrovision Corporation.  
All rights reserved
```

```
The FLEXlm host ID of this machine is "DISK_SERIAL_NUM=e855c07a"
```

The number between double quotes needs to be transmitted to The MathWorks in order to obtain the license file.

A

architecture
 license 1-3

C

checking PolySpace usage 1-18
concurrent license 1-4 1-8 1-22
Config Services 1-10
Configuration using Services 1-10
configuring
 FLEXnet server 1-10 1-15

D

directories
 documentation 1-9 1-14
 installation 1-9 1-14
 LINUX 1-7 1-14
 UNIX 1-7 1-14
 windows 1-9
 Windows 1-6
documentation
 directories 1-9 1-14

E

Error -10 1-20
Error -15 1-19
Error -21 1-20
Error -5 1-20
error messages 1-19

F

FLEXiDCleanupUtility.exe 1-5
FLEXiDInstaller.exe 1-5 1-9
flexlm license file 1-18
FLEXnet
 overview 1-2
 software components 1-5

FLEXnet 10.8 1-8
FLEXnet server 1-4
 configuring 1-10 1-15
 installing 1-9 1-14
 installing on existing 1-16
format
 license 1-22

H

HKEY_LOCAL_MACHINE\Software\FLEXlm\License
 Manager 1-18
hostid 1-23 to 1-25

I

individual license 1-3 1-24
installation directories 1-9 1-14
installing
 FLEXnet server 1-9 1-14
 licenses on existing FLEXnet server 1-16

L

license
 architecture 1-3
 format 1-22
 types 1-22
license file 1-17
 location 1-17
license.dat 1-5 1-9 to 1-11 1-15 1-17 1-22
license.lic 1-18
LM_LICENSE_FILE 1-18
lmdown 1-5 1-7 1-15
lmflex 1-6 to 1-7
lmgrd 1-5 1-7 1-11 1-16
lmhostid 1-5 1-7 1-25 to 1-26
lmttools.exe 1-5 1-10 1-25
lmutil 1-6 to 1-7 1-25
location
 documentation 1-9 1-14

- license file 1-17
- LINUX software 1-7
- software 1-9 1-14
- UNIX software 1-7
- Windows software 1-6

M

- machine_hostid 1-25
- MLM 1-5 1-7 1-23
- MLM_LICENSE_FILE 1-18

P

- path
 - to debug log file 1-11
 - to license file 1-11
 - to lmgrd.exe file 1-11
- performing status enquiry 1-13
- PolySpace Client for Ada 1-23
- PolySpace Client for C/C++ 1-23
- PolySpace Model Link SL 1-23
- PolySpace Model Link TL 1-23
- PolySpace Server for Ada 1-23
- PolySpace Server for C/C++ 1-23
- PolySpace UML Link RH 1-23
- polyspace-ada-check-license 1-18
- polyspace-ada95-check-license 1-18
- polyspace-c-check-license 1-18
- PolySpace_Client_Ada 1-23
- PolySpace_Client_C_CPP 1-23
- polyspace-cpp-check-license 1-18
- PolySpace_Feature 1-23
- PolySpace_Model_Link_SL 1-23
- PolySpace_Model_Link_TL 1-23
- PolySpace_Server_Ada 1-23
- PolySpace_Server_C_CPP 1-23

- PolySpace_UML_Link_RH 1-23
- PolySpaceInstallCommon 1-17

S

- Server Status 1-12
- server_hostid 1-23
- service name 1-10 to 1-11 1-15
- setting up
 - FLEXnet server 1-10 1-15
- software components
 - FLEXnet 1-5
 - Linux 1-7
 - Solaris 1-7
 - Windows 1-5
- Start/Stop/Reread 1-12
- supported versions 1-7

T

- troubleshooting 1-19

U

- usage
 - checking 1-18

V

- versions
 - supported 1-7
- vsn 1-26

W

- Windows service
 - configuring license manager 1-10